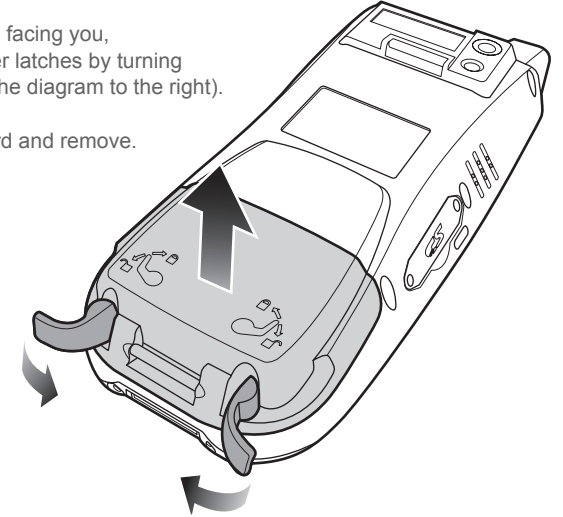


PA968 SIM Installation

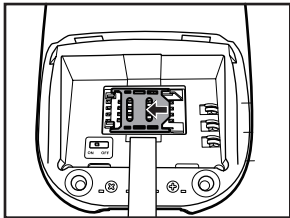
Quick Start Guide

1 Open Battery Cover

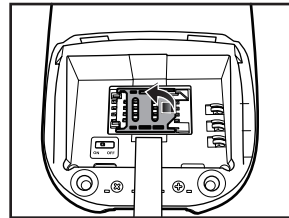
1. Turn the PA968 so the screen and keypad are facing down.
2. With the back of the PA968 facing you, unlock the two battery cover latches by turning them inward (as shown in the diagram to the right).
3. Lift the battery cover upward and remove.



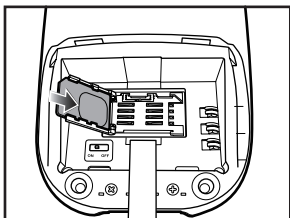
2 Insert SIM Card



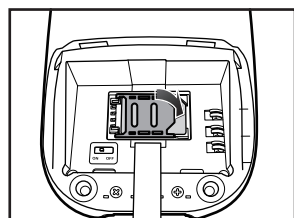
1. Unlock the SIM card door by sliding it to the left.



2. Lift the right edge of the SIM card door upward.



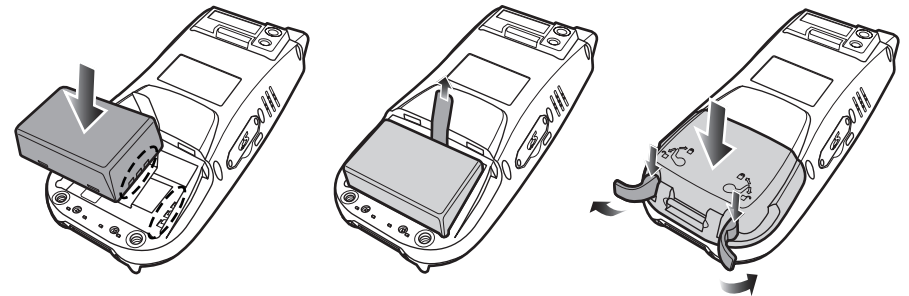
3. Insert SIM card into the card slot with the gold contacts facing down.



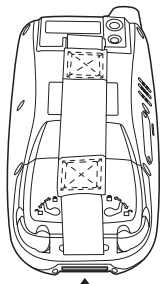
4. Lower the SIM card door to the closed position and slide to the right to lock.

3 Insert Battery

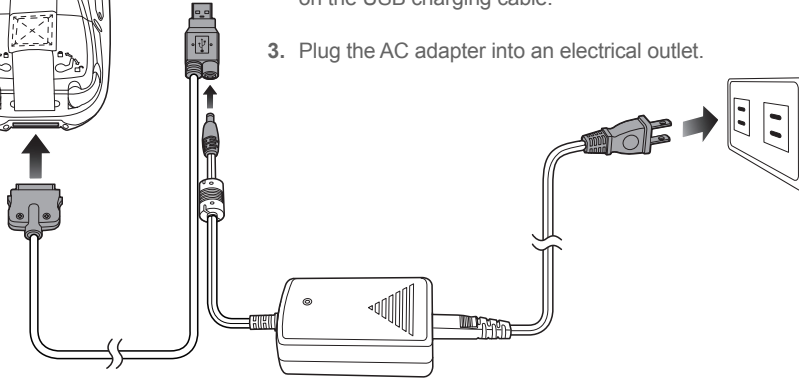
1. Insert the battery with the gold contacts of the battery in alignment with gold battery compartment contacts.
2. Ensure the plastic battery release tab is visible and accessible prior to pressing the battery into place.
3. Slide the battery cover into place. Press down on the latches and turn outward to lock the cover in place.



4 Plug In

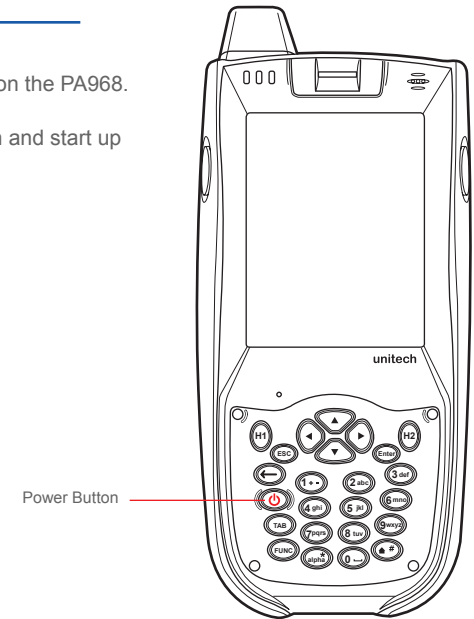


1. Insert the power/communication connector on the USB charging cable into the bottom of the PA968.
2. Insert the AC adapter cable into the power jack on the USB charging cable.
3. Plug the AC adapter into an electrical outlet.



5 Power On

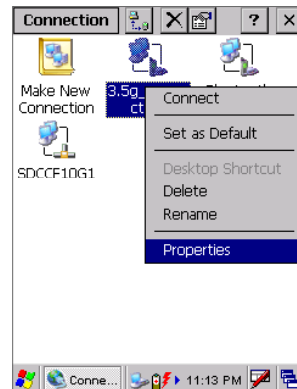
1. Press the power button to turn on the PA968.
2. Follow the on-screen calibration and start up instructions.



6 Select 3.5g Connection



1. Choose Start > Settings > Network and Dial-up Connections.

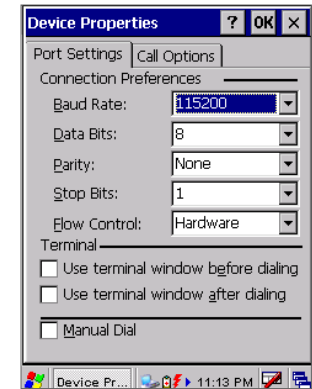


2. Click and hold to select "Properties" of 3.5G_Connection.

7 Configure Properties



1. Select Configure.

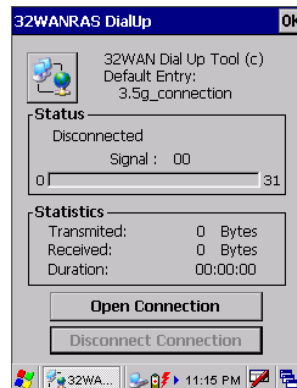


2. Select "Call Options" tab.

8 Specify Call Options

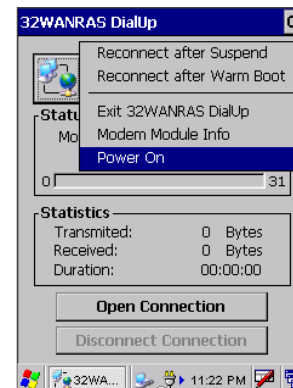


1. Under "Extra Settings" type in modem dialing string:
+cgdcont=1,"ip",m2m.t-mobile.com*;
^scfg=radio/band,12
2. Press OK.

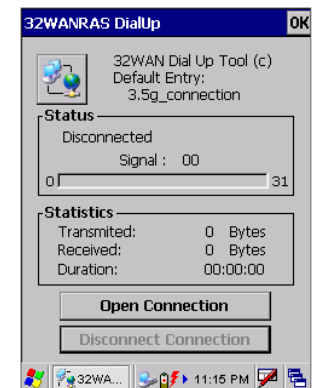


3. Close all windows.
4. Choose Start > Programs > GPRS > 32WANRAS

9 Power On Modem Module

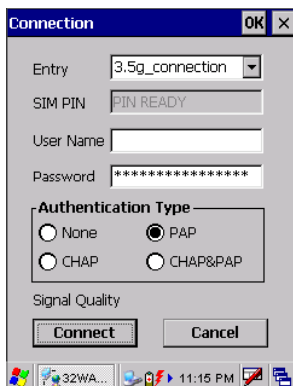


1. Select the icon.
2. Select Power On

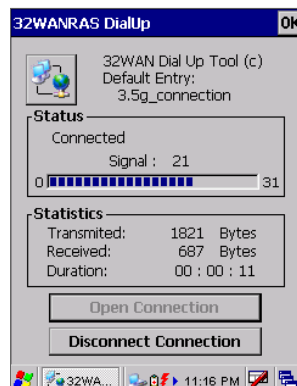


3. Select Open Connection.

10 Open Connection



1. Click Connect.

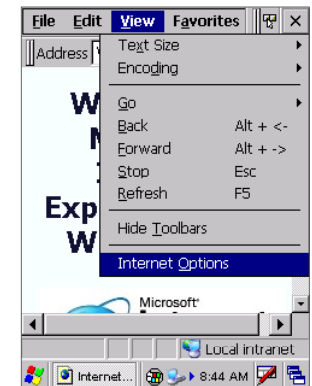


2. Click OK when status is connected.

11 Configure Browser



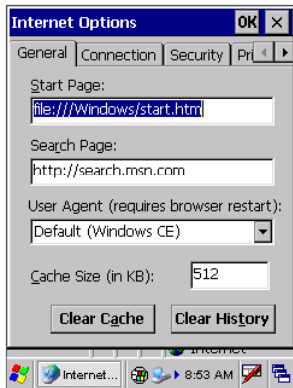
1. Launch Internet Explorer.
2. You will see the default Windows start page.



3. Choose View > Internet Options.

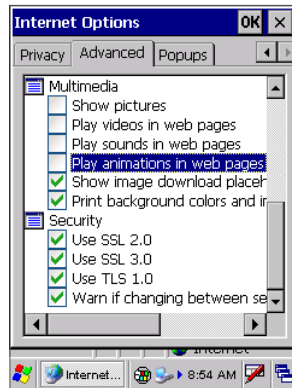
The Unitech Prepaid Data Plan allows for 500K/month. Browser configuration is recommended to prevent users from exceeding the monthly data limit.

12 Disable Multimedia



1. From the Internet Options screen, select the Advanced tab.

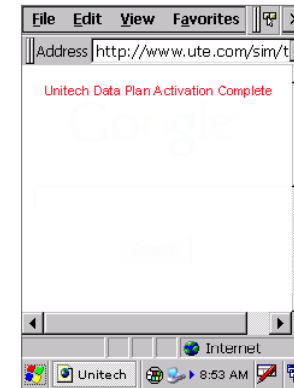
You will need to scroll to the right to access the Advanced tab.



2. Scroll down to Multimedia and uncheck the top four options. Click OK.

Disabling these features helps limit data use when browsing.

13 Self-Test



1. To test your connection, visit the Unitech test site: www.ute.com/sim/test.html